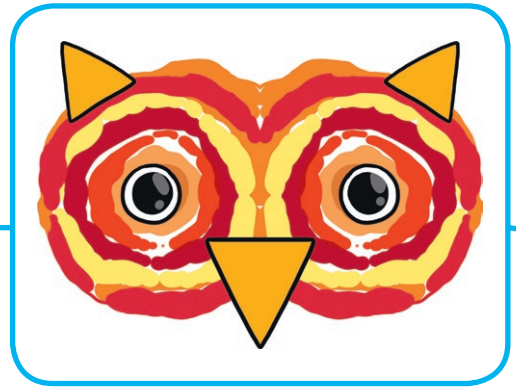


Paint Splat Owl

You will need:

- A4 white card (one per child)
- Orange or brown card
- Red, yellow, brown and orange paint
- Scissors
- Glue stick
- Googly eyes (one pair per child)



1. Fold the white card in half and then open it up again.
2. Squirt circles of red, yellow, orange and brown paint on ONE side of the crease. Be careful not to use too much paint or it will be very messy when you fold the card over!
3. Carefully, fold the card back down the crease you made in step 1. Use the palm of your hand to press down gently.
4. Gently, open the card back up and you should have a beautiful symmetrical pattern. Leave the paint to dry.
5. Next, cut three triangles out of the brown or orange card. These will be your owl's ears and beak! Once the paint is completely dry, glue them in place.
6. Glue your googly eyes in place.
7. Display your colourful paint splat owl!